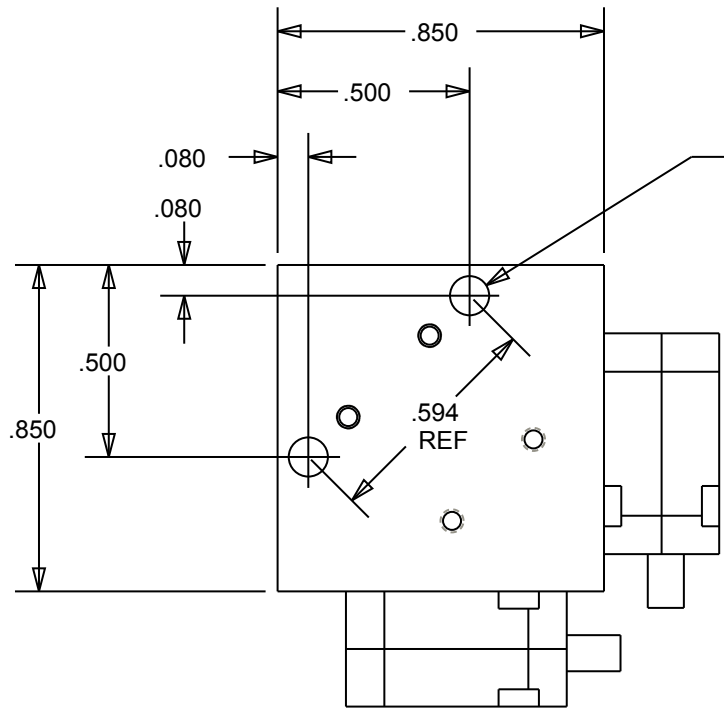
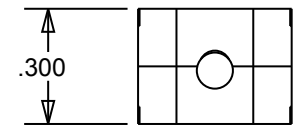


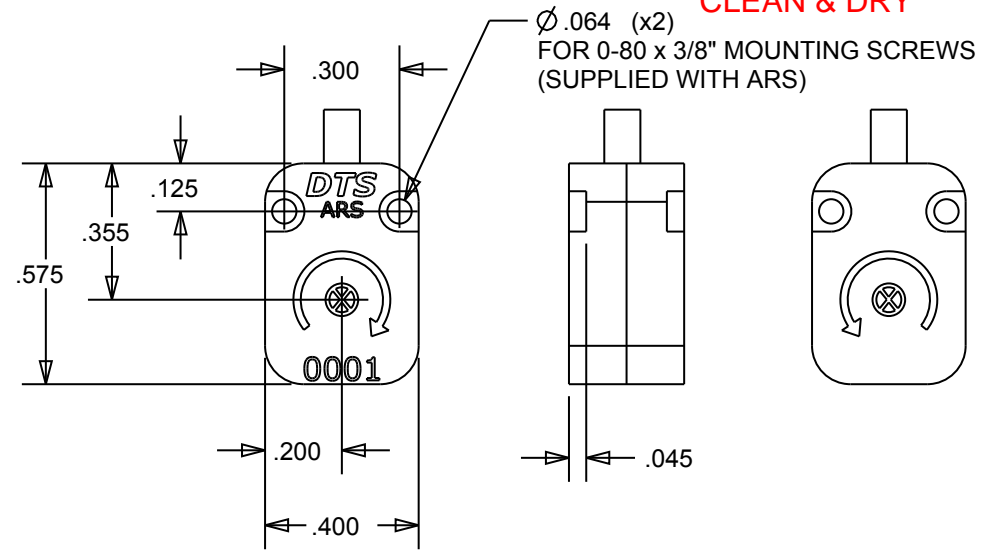
REVISIONS			
REV	DESCRIPTION	DATE	APPR



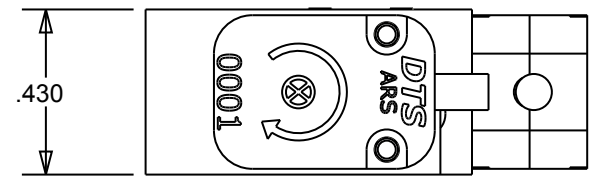
$\varnothing .102$ (x2)
 FOR 2-56 x 5/8" MOUNTING SCREWS (SUPPLIED WITH BLOCK) **TORQUE TO 2.5 IN-LB**
 OR M2.5 x 16MM (NOT SUPPLIED) **CLEAN & DRY**



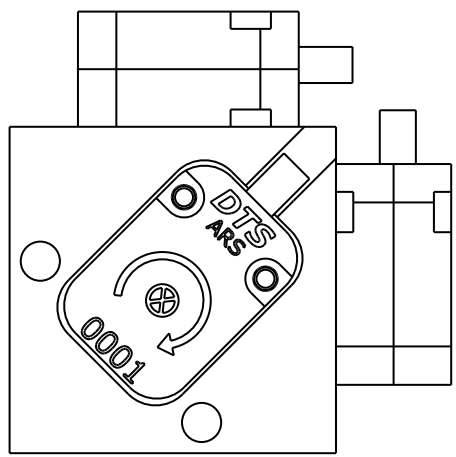
TORQUE TO 1 IN-LB
CLEAN & DRY



$\varnothing .064$ (x2)
 FOR 0-80 x 3/8" MOUNTING SCREWS
 (SUPPLIED WITH ARS)



ARS Weight: 2.2 grams (without cable)
 Triax Block Weight: 10 grams
 All weights +/- 1 gram



UNLESS OTHERWISE SPECIFIED DIMENSION ARE IN INCHES TOLERANCES ARE: FRACTIONS: DECIMALS: ANGLES: MACHINED: $\pm 1/64$.X $\pm .1$ $\pm .5^\circ$ 125 $\sqrt{\quad}$.XX $\pm .01$.XXX $\pm .002$ DO NOT SCALE DRAWING		909 ELECTRIC AVE, SUITE 206 SEAL BEACH, CA 90740 562-493-0158	
MATERIAL:		NAME/DESC: ARS & TRIAX MOUNTING BLOCK, MOUNTING DIMENSIONS	
DRAWING NO:		REV: 0	
DRAWN BY: G NEWTON 5/26/09		SIZE: A	SCALE 2:1
		SHEET 1 OF 1	